

Diacetylspermine Is a Novel Prediagnostic Serum Biomarker for Non–Small-Cell Lung Cancer and Has Additive Performance With Pro-Surfactant Protein B

William R. Wikoff, Samir Hanash, Brian DeFelice, Suzanne Miyamoto, Matt Barnett, Yang Zhao, Gary Goodman, Ziding Feng, David Gandara, Oliver Fiehn, and Ayumu Taguchi

See accompanying editorial on page 3847

William R. Wikoff, Brian DeFelice, and Oliver Fiehn, National Institutes of Health West Coast Metabolomics Center, University of California, Davis, Davis; Suzanne Miyamoto and David Gandara, University of California, Davis, Davis Comprehensive Cancer Center, Sacramento, CA; Samir Hanash, Yang Zhao, Ziding Feng, and Ayumu Taguchi, The University of Texas MD Anderson Cancer Center, Houston, TX; and Matt Barnett and Gary Goodman, Fred Hutchinson Cancer Research Center, Seattle, WA.

Published online ahead of print at www.jco.org on August 17, 2015.

Supported by Department of Defense Congressionally Directed Medical Research Program Grant No. W81XWH-10-1-0635, National Institutes of Health Grants No. UM1 CA167462 and U24 DK097154, the Canary Foundation, the Rubenstein Family Foundation, and the Lyda Hill Foundation.

Authors' disclosures of potential conflicts of interest are found in the article online at www.jco.org. Author contributions are found at the end of this article.

Corresponding author: Oliver Fiehn, PhD, West Coast Metabolomics Center, University of California Davis, Davis, CA 95616; e-mail: ofiehn@ucdavis.edu.

© 2015 by American Society of Clinical Oncology

0732-183X/15/3333w-3880w/\$20.00

DOI: 10.1200/JCO.2015.61.7779

ABSTRACT

Purpose

We have investigated the potential of metabolomics to discover blood-based biomarkers relevant to lung cancer screening and early detection. An untargeted metabolomics approach was applied to identify biomarker candidates using prediagnostic sera from the Beta-Carotene and Retinol Efficacy Trial (CARET) study.

Patients and Methods

A liquid chromatography/mass spectrometry hydrophilic interaction method designed to profile a wide range of metabolites was applied to prediagnostic serum samples from CARET participants (current or former heavy smokers), consisting of 100 patients who subsequently developed non–small-cell lung cancer (NSCLC) and 199 matched controls. A separate aliquot was used to quantify levels of pro-surfactant protein B (pro-SFTPB), a previously established protein biomarker for NSCLC. On the basis of the results from the discovery set, blinded validation of a metabolite, identified as N¹,N¹²-diacetylspermine (DAS), and pro-SFTPB was performed using an independent set of CARET prediagnostic sera from 108 patients with NSCLC and 216 matched controls.

Results

Serum DAS was elevated by 1.9-fold, demonstrating significant specificity and sensitivity in the discovery set for samples collected up to 6 months before diagnosis of NSCLC. In addition, DAS significantly complemented performance of pro-SFTPB in both the discovery and validations sets, with a combined area under the curve in the validation set of 0.808 ($P < .001$ v pro-SFTPB).

Conclusion

DAS is a novel serum metabolite with significant performance in prediagnostic NSCLC and has additive performance with pro-SFTPB.

J Clin Oncol 33:3880-3886. © 2015 by American Society of Clinical Oncology

INTRODUCTION

Recently, major efforts have been directed toward early detection of lung cancer through low-dose computed tomography (LDCT) scanning. Data from the National Lung Screening Trial (NLST) suggest that yearly screening with thoracic LDCT scanning for high-risk current and former smokers reduces lung cancer mortality by 20% and total mortality by 7%.¹ However, issues including indeterminate nodules detected by LDCT and radiation exposure impact the practicality of LDCT-based screening on a national and global basis. A blood-based biomarker or multiplexed marker panel that could complement LDCT would represent a major advance in implementing lung cancer screening.

Efforts to develop blood-based biomarkers for lung cancer early detection using a variety of methodologies are currently ongoing.² Proteomic studies have led to the identification of several candidate markers including pro-surfactant protein B (pro-SFTPB), a target of a lineage-survival oncogene in lung cancer, *NKX2-1*.³ Validation studies using blood samples collected at the time of LDCT screening for lung cancer substantiated the performance of pro-SFTPB. Multivariable logistic regression models were used to evaluate the predictive ability of pro-SFTPB. The area under the curve (AUC) values of the full model with and without pro-SFTPB were 0.741 (95% CI, 0.696 to 0.783) and 0.669 (95% CI, 0.620 to 0.717), respectively (difference in AUC, $P < .001$).⁴

Single markers are unlikely to have sufficient performance for implementation in a screening

setting, hence the need to explore several discovery platforms to identify markers that provide complementary performance. Metabolomics represents a global unbiased approach to the profiling of small molecules and has been established as a platform for biomarker discovery for a variety of human biofluids and tissues.⁵⁻⁷ Here we used an untargeted liquid chromatography/mass spectrometry (MS) metabolomics approach to identify metabolites that distinguish human sera collected before the diagnosis of lung cancer from matched control sera in a prospective cohort of high-risk patients from the Beta-Carotene and Retinol Efficacy Trial (CARET).^{8,9} We describe for the first time, to our knowledge, increased serum levels of N¹,N¹²-diacetylspermine (DAS) preceding a diagnosis of lung cancer using matched case-control specimens. We further provide evidence in blinded validation studies in a second independent patient cohort of its significant additive performance compared with pro-SFTPb alone.

PATIENTS AND METHODS

Study Population

Participants in this nested case-control study were selected from the CARET study (Data Supplement).⁹ In total, 208 patients with lung cancer were selected from 222 patients with non-small-cell lung cancer (NSCLC) with serum available in the CARET repository from blood draws that occurred up to 12 months before diagnosis. Fourteen patients with insufficient sample available for the study were excluded. Two control individuals who were free of lung cancer were matched to each patient case on age at baseline (5-year groups), sex, baseline smoking status (current *v* former), and study enrollment phase (pilot [1985 to 1988] or full-scale trial [1989 to 1994], thus accounting for sample storage time). For one patient, only a single control could be matched, resulting in a total of 208 patients and 415 controls included in the study. The samples were divided into two sets; samples from 100 matched sets were used for biomarker discovery (the discovery set), and the remaining 108 matched sets were reserved for validation of markers identified by the discovery efforts (the validation set). All CARET participants provided informed consent at recruitment and throughout follow-up, and the institutional review boards at each of the six study centers approved all study procedures.

Sample Preparation and MS Analysis of Metabolites

Detailed description of the methodology is provided in the Data Supplement. Briefly, serum samples (laboratory personnel were blinded to study information) were treated with ice cold methanol and prepared for untargeted metabolomics analysis using hydrophilic interaction chromatography with an acetonitrile:water gradient. MS analysis and data acquisition were performed using an Agilent quadrupole time-of-flight 6530 mass spectrometer (Agilent, Santa Clara, CA) with positive and negative ionization and in full scan mode with data-dependent MS/MS for compound identification. DAS (CAS No. 61345-83-3) was synthesized according to a previously published method.¹⁰

Pro-SFTPb Assay

The pro-SFTPb assay was performed as previously described by laboratory personnel blinded to the characteristics of the study participants.^{4,11} Pro-SFTPb concentrations were determined using anti-pro-SFTPb mouse monoclonal antibodies developed against the N-terminal propeptide of human SFTPb. Serum samples with 1:100 dilution and various amounts of N-terminal propeptide of SFTPb as standards were added to the wells. Anti-pro-SFTPb mouse monoclonal antibody was biotinylated with EZ-Link Sulfo-NHS-LC-Biotin (Thermo Fisher Scientific, Waltham, MA) and used for incubation at 0.5 µg/mL. After washing, each well was incubated with Streptavidin-HRP followed by incubation of color reagents (eBioscience, San Diego, CA) to which a stop solution was added. The absorbance was measured at 450 nm and 620 nm as the

reference wavelength with a Versamax microplate reader (Molecular Devices, Sunnyvale, CA). All samples were assayed in duplicate.

Statistical Analysis

The performance of 2,161 individual metabolomic mass/retention time features was assessed using receiver operating characteristic (ROC) curve analysis in the discovery set. For each metabolomic feature, a total area under the ROC curve (AUC) was calculated to evaluate overall performance, and a partial-area-under ROC curve (pAUC) was calculated to evaluate classification performance focusing on high specificity. Permutation data sets (*N* = 1,000) were generated by randomly permuting case-control status from the original data set. Total AUCs and pAUCs for specificity ≥ 90%, 95%, and 98% were then calculated on the permuted data sets to obtain a distribution of AUCs/pAUCs under the null hypothesis that the markers have no association with cancer. The study set AUCs/pAUCs were evaluated against the distribution of values from the permuted data sets to calculate false discovery rates (FDRs) and adjusted *P* values.¹²

Potential confounders and effect modifiers on the DAS and lung cancer association were examined by the Mann-Whitney *U* test or Kruskal-Wallis test, stratified by case-control status, to assess association between DAS and several potential confounders, including sex, age, fasting time (hours since last meal), body mass index, smoking status (current *v* former), pack-years, and CARET exposure population (asbestos-exposed *v* heavy smoker cohort), as well as histology, stage of disease, and time of blood draw with respect to diagnosis (0 to 6 months *v* > 6 to 12 months prior) among patients with lung cancer only, as presented in the Data Supplement. DAS and pro-SFTPb were log₂-transformed for development of the combined model. The *P* values for significance of the combination of DAS and pro-SFTPb were based on the likelihood ratio test in a logistic regression analysis. All statistical analyses were performed using Prism 6 (version 6.01; GraphPad, La Jolla, CA) and R version 3.0.2 (<http://www.r-project.org/>).

RESULTS

Increased Levels of DAS in Serum From Prediagnostic Patients With Lung Cancer in the Discovery Set

The untargeted metabolomics approach allowed profiling of a broad array of blood compounds, ranging from highly polar compounds, such as creatinine, amino acids, and acylcarnitines, to large lipids (Data Supplement). Blinded analysis of sera from 100 prediagnostic patients and 199 matched controls (the discovery set; Table 1) yielded 1.9-fold elevated levels of an unknown compound with a *P* < 10⁻⁷ and an adjusted *P* < .001 after applying a Benjamini-Hochberg FDR correction for multiple testing (Fig 1A). This compound achieved statistical significance for total AUC of 0.657, (*P* = .01 and FDR-adjusted *P* = .025). The pAUCs for ≥ 90% and 95% specificity were also statistically significant for this compound (pAUC = 0.02, *P* < .001, and FDR *P* < .001 for ≥ 90% specificity; and pAUC = 0.007, *P* = .006, and FDR *P* = .007 for ≥ 95% specificity). The coefficient of variation was 7.8% for within run and 13.4% for between run. None of the other compounds achieved significance after FDR correction for multiple testing.

The unknown compound was characterized by an accurate mass-to-charge ratio of 287.2437, and identification was initiated by using the accurate mass to generate molecular formulas. This yielded a single likely molecular formula, C₁₄H₃₀N₄O₂ [M+H]⁺, which is within 1 ppm of the measured mass-to-charge ratio. Using the Chempider database (www.chemspider.com),¹³ 37 possible compounds were found corresponding to this single molecular formula. Of these, one compound, DAS, was judged to be biologically and biochemically the most likely of the candidate compounds (Fig 1B). To confirm the identity of this compound, DAS was synthesized and analyzed using MS.¹⁰ The unknown compound

Table 1. Characteristics of Patients and Controls in the Discovery and Validation Sets

Characteristic	Discovery Set		Validation Set	
	No. of Patients (n = 100)	No. of Controls (n = 199)	No. of Patients (n = 108)	No. of Controls (n = 216)
Age, years*				
Mean	61.1	60.9	61.9	61.9
SD	5.8	5.9	5.7	5.9
Pack-years				
Mean	57	47	54	49
SD	23	22	23	20
Age at diagnosis, years				
Mean	66.2		65.1	
SD	6.2		6.3	
Sex*				
Male	75	149	75	150
Female	25	50	33	66
Race				
White	94	185	99	200
Black	3	5	6	8
Other	3	9	3	8
Exposure population				
Asbestos-exposed worker	31	56	35	53
Heavy smoker	69	143	73	163
Smoking status at baseline*				
Current smoker	61	121	72	144
Former smoker	39	78	36	72
Histology				
Adenocarcinoma	40		40	
SCC	30		38	
Other NSCLC	30		30	
Stage				
I and II	14		26	
III and IV	69		64	
Unknown	17		18	
Months from blood collection to diagnosis				
0-6	48		40	
> 6-12	52		68	

Abbreviations: NSCLC, non-small-cell lung cancer; SCC, squamous cell carcinoma; SD, standard deviation.

*Matching variables.

exhibited a match to the synthetic DAS based on the following four criteria: column retention time, isotope pattern, MS fragmentation (collision-induced dissociation MS/MS), and accurate mass (Figs 1C and 1D). Thus, the unknown compound was unequivocally identified as DAS based on four orthogonal criteria. The synthesized standard allowed determination of DAS concentration in serum, which was estimated at an average of 3.75 nmol/L among controls.

Diagnostic Performance of DAS in the Discovery Set

An ROC analysis yielded an AUC of 0.657 (95% CI, 0.586 to 0.727) for all patients combined (Table 2). DAS levels were significantly elevated in all subgroups. Of note, the AUC was 0.610 (95% CI, 0.510 to 0.710) for serum samples collected 6 to 12 months before diagnosis and 0.710 (95% CI, 0.613 to 0.808) for sera collected 0 to 6 months before diagnosis. In addition, DAS levels were significantly higher in samples collected 0 to 6 months before diagnosis than samples collected 6 to 12 months before diagnosis ($P = .0110$, Mann-Whitney U test; Data Supplement), suggesting the association of increased serum DAS levels with tumor development and progression.

The levels of pro-SFTPb were significantly elevated in prediagnostic sera from patients with lung cancer compared with controls ($P < .001$, Mann-Whitney U test; AUC = 0.635) in the initial discovery set used for metabolomic profiling (Data Supplement). Levels of pro-SFTPb increased significantly in both samples collected closer to diagnosis (0 to 6 months; $P = .0142$, Mann-Whitney U test; AUC = 0.626) and samples collected farther from diagnosis (> 6 to 12 months; $P = .0031$, Mann-Whitney U test; AUC = 0.645). Serum pro-SFTPb levels were also significantly elevated in current smokers ($P < .001$, Mann-Whitney U test; AUC = 0.682), patients with adenocarcinoma ($P = .0015$, Mann-Whitney U test; AUC = 0.677), and patients with advanced stage (stage III and IV; $P < .001$, Mann-Whitney U test; AUC = 0.663).

Validation of DAS and Pro-SFTPb As Single and Combined Markers in an Independent CARET Test Set

An independent validation set was used that consisted of 108 patients and 216 controls (Table 1), with patients and controls matched by age, sex, and smoking status at baseline, as

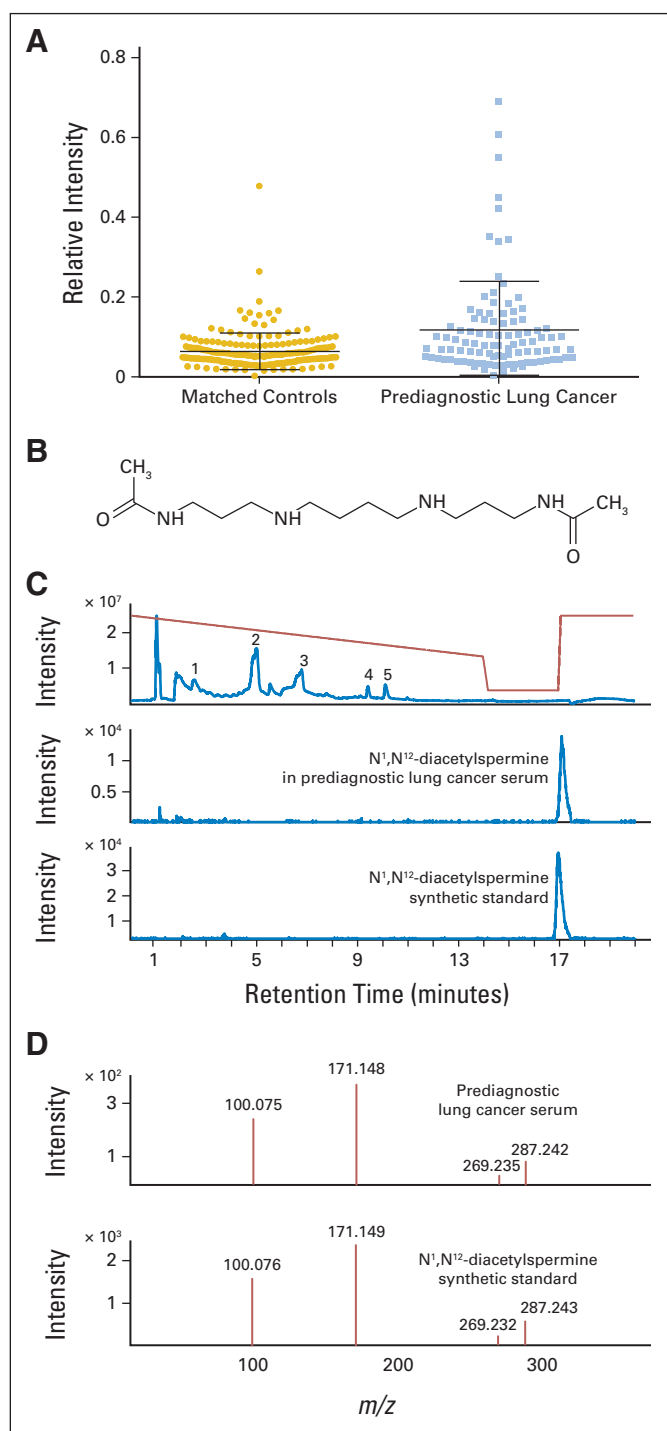


Fig 1. Identification of a compound with 1.9-fold elevated levels in prediagnostic lung cancer sera as N^1,N^{12} -diacetylspermine (DAS). (A) Relative intensity of DAS (originally an unknown with mass-to-charge ratio [m/z] of 287.2437) in metabolomics data in prediagnostic lung cancer versus matched controls. Bars indicate mean and standard deviation. (B) Chemical structure of DAS. (C) Top panel shows total ion chromatogram of serum from a participant later diagnosed with lung cancer, showing peaks for (1) creatinine, (2) diacyl lipids, (3) lysophosphatidylcholine lipids, (4) acetylcarnitine, and (5) carnitine. Gradient profile is indicated in red. Extracted ion chromatogram for DAS (m/z , 287.24) in serum from a participant later diagnosed with lung cancer (middle panel) and for synthetic DAS (bottom panel). (D) Quadruple time-of-flight (QTOF) collision-induced dissociation (tandem mass spectrometry [MS/MS]) at 20 V of the unknown ion (m/z , 287.24) isolated from prediagnostic lung cancer serum (top panel) and QTOF MS/MS at 20 V of synthetic DAS (bottom panel).

Table 2. Performance of DAS in the Discovery Set

Variable	<i>P</i>	AUC	95% CI
Total	< .001	0.657	0.586 to 0.727
Sex			
Female	.0493	0.640	0.497 to 0.783
Male	< .001	0.663	0.581 to 0.744
Smoking status			
Current smoker	< .001	0.672	0.585 to 0.758
Former smoker	.0158	0.637	0.516 to 0.759
Histology			
Adenocarcinoma	.0349	0.618	0.509 to 0.728
SCC	.0013	0.708	0.590 to 0.826
Other NSCLC	.0131	0.662	0.521 to 0.802
Stage			
I and II	.0144	0.735	0.568 to 0.903
III and IV	< .001	0.679	0.595 to 0.763
Timing of blood draw, months			
0-6	< .001	0.710	0.613 to 0.808
> 6-12	.0257	0.610	0.510 to 0.710

Abbreviations: AUC, area under the curve; DAS, N^1,N^{12} -diacetylspermine; NSCLC, non-small-cell lung cancer; SCC, squamous cell carcinoma.

with the discovery set. DAS was assayed using the same MS approach as for the discovery set. DAS levels were significantly elevated among patients versus controls, with an AUC of 0.650 (95% CI, 0.585 to 0.716; Table 3). As was observed in the discovery study, higher DAS levels were observed in samples from patients with lung cancer collected 0 to 6 months versus 6 to 12 months before diagnosis ($P = .0318$, Mann-Whitney U test; Data Supplement). In addition, ROC analysis yielded an AUC for DAS of 0.740 (95% CI, 0.635 to 0.845) in samples collected 0 to 6 months before diagnosis and 0.588 (95% CI, 0.505 to 0.671) in samples collected 6 to 12 months before diagnosis. Pro-SFTP levels were also significantly elevated in prediagnostic sera from patients with lung cancer compared

Table 3. Performance of DAS in the Validation Set

Variable	<i>P</i>	AUC	95% CI
Total	< .001	0.650	0.585 to 0.716
Sex			
Female	.3057	0.563	0.434 to 0.692
Male	< .001	0.692	0.620 to 0.765
Smoking status			
Current smoker	< .001	0.652	0.569 to 0.735
Former smoker	.0151	0.644	0.537 to 0.750
Histology			
Adenocarcinoma	.3084	0.557	0.448 to 0.667
SCC	.0063	0.658	0.547 to 0.769
Other NSCLC	< .001	0.754	0.643 to 0.865
Stage			
I and II	.0124	0.675	0.546 to 0.804
III and IV	< .001	0.693	0.613 to 0.773
Timing of blood draw, months			
0-6	< .001	0.740	0.634 to 0.846
> 6-12	.0409	0.588	0.505 to 0.671

Abbreviations: AUC, area under the curve; DAS, N^1,N^{12} -diacetylspermine; NSCLC, non-small-cell lung cancer; SCC, squamous cell carcinoma.

Table 4. Performance of the Combination of DAS and Pro-SFTPb in the Validation Set

Measure	Total	Timing of Blood Draw	
		0-6 Months	> 6-12 Months
Pro-SFTPB + DAS			
AUC	0.732	0.808	0.688
95% CI	0.673 to 0.791	0.724 to 0.891	0.609 to 0.767
Sensitivity at 95% specificity	0.222	0.350	0.176
Specificity at 95% sensitivity	0.181	0.388	0.140
<i>P</i> (v DAS)	< .001	< .001	< .001
<i>P</i> (v pro-SFTPB)	< .001	< .001	.0634
DAS			
<i>P</i>	< .001	< .001	.0409
AUC	0.650	0.740	0.588
95% CI	0.585 to 0.716	0.634 to 0.846	0.505 to 0.671
Sensitivity at 95% specificity	0.120	0.275	0.059
Specificity at 95% sensitivity	0.111	0.063	0.088
Pro-SFTPB			
<i>P</i>	< .001	< .001	< .001
AUC	0.699	0.741	0.675
95% CI	0.639 to 0.760	0.650 to 0.831	0.595 to 0.755
Sensitivity at 95% specificity	0.157	0.175	0.191
Specificity at 95% sensitivity	0.194	0.363	0.169

Abbreviations: AUC, area under the curve; DAS, N¹,N¹²-diacetylspermine; pro-SFTPB, pro-surfactant protein B.

Abbreviations: AUC, area under the curve; DAS, N¹,N¹²-diacetylspermine; pro-SFTPb, pro-surfactant protein B.

with controls ($P < .001$, Mann-Whitney U test; AUC = 0.699; Data Supplement). Pro-SFTPb levels were significantly elevated in all subgroup analyses in the validation set.

Because pro-SFTPb is an established lung cancer biomarker, we assessed the added contribution of DAS to the performance of pro-SFTPb alone in the validation set. The performance of the combination of pro-SFTPb and DAS using logistic regression was significantly improved compared with pro-SFTPb alone ($P < .001$, likelihood ratio test) and DAS alone ($P < .001$, likelihood ratio test; Table 4 and Fig 2). The

AUC for combination of DAS and pro-SFTPb was 0.808 (95% CI, 0.724 to 0.891) with a sensitivity of 0.350 at 95% specificity in the comparison of lung cancer samples collected 0 to 6 months before diagnosis compared with healthy controls and an AUC of 0.732 overall.

DISCUSSION

This study identified, for the first time to our knowledge, increased serum levels of DAS, a doubly acetylated polyamine compound, preceding a diagnosis of lung cancer. Prior studies identified DAS in urine from patients with colorectal, breast, and bladder cancers¹⁴⁻¹⁶; in tissues from colorectal cancer; and in liver metastasis.¹⁷

The predictive value of DAS was greater in samples collected 0 to 6 months compared with 6 to 12 months before diagnosis, suggesting that increased levels of DAS tracked with the development and progression of lung cancer up to the time of diagnosis. Our case-control study establishes the potential contribution of DAS to early detection of lung cancer. In this study, two control individuals who were free of lung cancer were matched to each patient on age at baseline, sex, baseline smoking status, and study enrollment phase. Matching risk factors (age and smoking) potentially impacts the performance of DAS on sensitivity and specificity if DAS levels are associated with smoking or age.¹⁸ DAS was significantly associated with age of the control individuals in the discovery set (Data Supplement) but not in the validation set (data not shown). Therefore, DAS levels are likely independent from these risk factors, and the potential bias will be minimal. Most relevant to potential clinical applications is whether DAS and pro-SFTPb could identify asymptomatic patients with lung cancer in a screening setting. Assuming a lung cancer annual incidence rate of

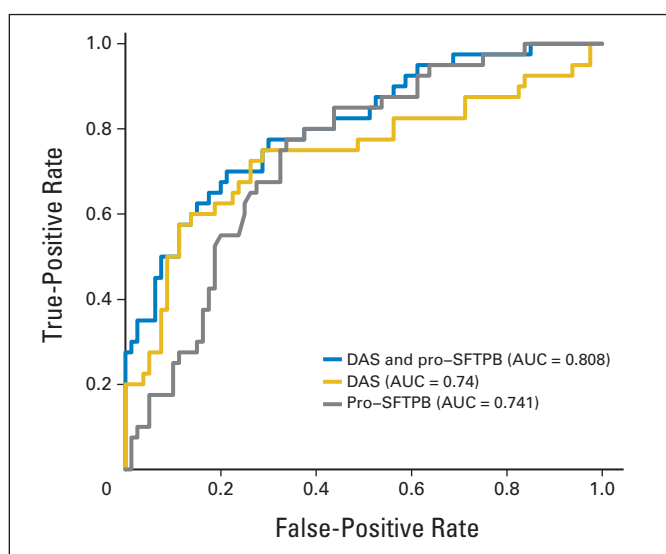


Fig 2. Receiver operative characteristic curves of pro-surfactant protein B (pro-SFTPb), N¹,N¹²-diacetylspermine (DAS), and combination of pro-SFTPb and DAS in lung cancer samples collected 0 to 6 months before diagnosis compared with matched controls in the validation set. AUC, area under the curve.

0.0625%, as observed in the NLST study,¹ and based on the sensitivity of 35% at 95% specificity for the model combining pro-SFTPb and DAS in prediagnostic sera collected within 6 months before diagnosis of lung cancer, the positive predictive value is 4.2%. This compares favorably to the positive predictive value of 3.6% observed in NLST for nodules suggestive of lung cancer by LDCT. Likewise, DAS levels in benign lung disease, such as chronic obstructive pulmonary disease, will need to be assessed, as a recent study has indicated the association of higher plasma pro-SFTPb levels with increased severity of airflow limitation and rapid progression of chronic obstructive pulmonary disease over 2 years.¹⁹

DAS is an acetylated derivative of spermine, a well-known polyamine. Polyamines are small cationic molecules that have long been implicated in regulating key metabolic enzymes in normal and cancer cells.²⁰ Polyamines are essential in normal mammalian cells with levels that are controlled through a complex network that regulates their synthesis, degradation, and transport. Ornithine decarboxylase and S-adenosylmethionine decarboxylase are two important enzymes in the polyamine biosynthetic pathway, which are themselves tightly regulated through various transcriptional, translational, and post-translational mechanisms.²¹ Polyamines are also regulated by oncogenes and tumor-suppressor genes in epithelial tumors and have even been tested as targets of chemopreventative agents and pharmaceutical inhibitors in cancer treatment.^{20,22}

The biosynthetic pathway of DAS has not been fully elucidated. DAS is likely produced from the substrate acetylspermine via the enzyme spermidine/spermine N¹-acetyltransferase.²³ Overexpression of spermidine/spermine N¹-acetyltransferase results in high levels of both acetylspermine and diacetylspermine.²⁴ Polyamine export from mammalian cells occurs primarily via acetylated polyamines, including DAS, by a diamine transporter that has been identified as SLC3A2, a component of CD98²⁵ more commonly known as the amino acid transporter LAT1.²⁶ Therefore, SLC3A2 may affect the blood DAS levels as observed in our study. The transporter coprecipitates with the spermine acetylase SAT1, thus supporting its role in polyamine metabolism.²⁷ SLC3A2 is also colocalized with SLC7A5, and the complex, designated CD98, is known to be highly expressed in several human

cancers,²⁸ including lung cancer.^{29,30} Inhibition of CD98 has antitumor activity in NSCLC.³¹ CD98 has prognostic significance in NSCLC^{29,30,32} and in neuroendocrine tumors.³³ Moreover, an increased supply of spermine in the context of glucose restriction in the tumor microenvironment has been found to increase DAS secretion by macrophages.³⁴

Unbiased metabolomics profiling has identified 1.9-fold elevated levels of DAS in a discovery set of prediagnostic lung cancer sera related to matched controls, which was validated in an independent blinded set of samples. We further demonstrated significant additive performance of the combination of DAS and pro-SFTPb compared with either biomarker alone, suggesting the utility of this metabolite for lung cancer early detection as part of a marker panel.

AUTHORS' DISCLOSURES OF POTENTIAL CONFLICTS OF INTEREST

Disclosures provided by the authors are available with this article at www.jco.org.

AUTHOR CONTRIBUTIONS

Conception and design: William R. Wikoff, Samir Hanash, Ziding Feng, David Gandara, Oliver Fiehn, Ayumu Taguchi

Financial support: David Gandara, Oliver Fiehn

Administrative support: David Gandara

Provision of study materials or patients: Gary Goodman, David Gandara

Collection and assembly of data: William R. Wikoff, Brian DeFelice, Suzanne Miyamoto, Gary Goodman, David Gandara, Oliver Fiehn, Ayumu Taguchi

Data analysis and interpretation: William R. Wikoff, Samir Hanash, Matt Barnett, Yang Zhao, Ziding Feng, David Gandara, Oliver Fiehn, Ayumu Taguchi

Manuscript writing: All authors

Final approval of manuscript: All authors

REFERENCES

1. National Lung Screening Trial Research Team, Aberle DR, Adams AM, et al: Reduced lung-cancer mortality with low-dose computed tomographic screening. *N Engl J Med* 365:395-409, 2011
2. Hassanein M, Callison JC, Callaway-Lane C, et al: The state of molecular biomarkers for the early detection of lung cancer. *Cancer Prev Res (Phila)* 5:992-1006, 2012
3. Taguchi A, Politi K, Pitteri SJ, et al: Lung cancer signatures in plasma based on proteome profiling of mouse tumor models. *Cancer Cell* 20:289-299, 2011
4. Sin DD, Tammemagi CM, Lam S, et al: Pro-surfactant protein B as a biomarker for lung cancer prediction. *J Clin Oncol* 31:4536-4543, 2013
5. Wikoff WR, Gangoiti JA, Barshop BA, et al: Metabolomics identifies perturbations in human disorders of propionate metabolism. *Clin Chem* 53:2169-2176, 2007
6. Sreekumar A, Poisson LM, Rajendiran TM, et al: Metabolomic profiles delineate potential role for sarcosine in prostate cancer progression. *Nature* 457:910-914, 2009
7. Wang Z, Klipfell E, Bennett BJ, et al: Gut flora metabolism of phosphatidylcholine promotes cardiovascular disease. *Nature* 472:57-63, 2011
8. Omenn GS, Goodman GE, Thornquist MD, et al: Effects of a combination of beta carotene and vitamin A on lung cancer and cardiovascular disease. *N Engl J Med* 334:1150-1155, 1996
9. Goodman GE, Thornquist MD, Balmes J, et al: The Beta-Carotene and Retinol Efficacy Trial: Incidence of lung cancer and cardiovascular disease mortality during 6-year follow-up after stopping beta-carotene and retinol supplements. *J Natl Cancer Inst* 96:1743-1750, 2004
10. Samejima K, Hiramatsu K, Takahashi K, et al: Identification and determination of urinary acetyl-polyamines in cancer patients by electrospray ionization and time-of-flight mass spectrometry. *Anal Biochem* 401:22-29, 2010
11. Taguchi A, Hanash S, Rundle A, et al: Circulating pro-surfactant protein B as a risk biomarker for lung cancer. *Cancer Epidemiol Biomarkers Prev* 22:1756-1761, 2013
12. Dodd LE, Pepe MS: Partial AUC estimation and regression. *Biometrics* 59:614-623, 2003
13. Williams AJ: Public chemical compound databases. *Curr Opin Drug Discov Devel* 11:393-404, 2008
14. Hiramatsu K, Takahashi K, Yamaguchi T, et al: N(1),N(12)-Diacetylspermine as a sensitive and specific novel marker for early- and late-stage colorectal and breast cancers. *Clin Cancer Res* 11:2986-2990, 2005
15. Kawakita M, Hiramatsu K, Yanagiya M, et al: Determination of N(1),N(12)-diacetylspermine in urine: A novel tumor marker. *Methods Mol Biol* 720:367-378, 2011
16. Nakayama Y, Torigoe T, Minagawa N, et al: The clinical usefulness of urinary N(1),N(12)-diacetylspermine (DiAcSpm) levels as a tumor marker in patients with colorectal cancer. *Oncol Lett* 3:970-974, 2012
17. Kuwata G, Hiramatsu K, Samejima K, et al: Increase of N1, N12-diacetylspermine in tissues from colorectal cancer and its liver metastasis. *J Cancer Res Clin Oncol* 139:925-932, 2013
18. Pepe MS, Fan J, Seymour CW, et al: Biases introduced by choosing controls to match risk factors of cases in biomarker research. *Clin Chem* 58:1242-1251, 2012

19. Leung JM, Mayo J, Tan W, et al: Plasma pro-surfactant protein B and lung function decline in smokers. *Eur Respir J* 45:1037-1045, 2015
20. Paz EA, Garcia-Huidobro J, Ignatenko NA: Polyamines in cancer. *Adv Clin Chem* 54:45-70, 2011
21. Persson L: Polyamine homeostasis. *Essays Biochem* 46:11-24, 2009
22. Nowotarski SL, Woster PM, Casero RA Jr: Polyamines and cancer: Implications for chemotherapy and chemoprevention. *Expert Rev Mol Med* 15:e3, 2013
23. Casero RA Jr, Pegg AE: Spermidine/spermine N1-acetyltransferase: The turning point in polyamine metabolism. *FASEB J* 7:653-661, 1993
24. Vujcic S, Halmekeyto M, Diegelman P, et al: Effects of conditional overexpression of spermidine/spermine N1-acetyltransferase on polyamine pool dynamics, cell growth, and sensitivity to polyamine analogs. *J Biol Chem* 275:38319-38328, 2000
25. Xie X, Gillies RJ, Gerner EW: Characterization of a diamine exporter in Chinese hamster ovary cells and identification of specific polyamine substrates. *J Biol Chem* 272:20484-20489, 1997
26. Uemura T, Stringer DE, Blohm-Mangone KA, et al: Polyamine transport is mediated by both endocytic and solute carrier transport mechanisms in the gastrointestinal tract. *Am J Physiol Gastrointest Liver Physiol* 299:G517-G522, 2010
27. Uemura T, Yerushalmi HF, Tsapralis G, et al: Identification and characterization of a diamine exporter in colon epithelial cells. *J Biol Chem* 283:26428-26435, 2008
28. Cantor JM, Ginsberg MH: CD98 at the crossroads of adaptive immunity and cancer. *J Cell Sci* 125:1373-1382, 2012
29. Xiao T, Ying W, Li L, et al: An approach to studying lung cancer-related proteins in human blood. *Mol Cell Proteomics* 4:1480-1486, 2005
30. Kaira K, Oriuchi N, Imai H, et al: CD98 expression is associated with poor prognosis in resected non-small-cell lung cancer with lymph node metastases. *Ann Surg Oncol* 16:3473-3481, 2009
31. Imai H, Kaira K, Oriuchi N, et al: Inhibition of L-type amino acid transporter 1 has antitumor activity in non-small cell lung cancer. *Anticancer Res* 30:4819-4828, 2010
32. Kaira K, Oriuchi N, Imai H, et al: Prognostic significance of L-type amino acid transporter 1 (LAT1) and 4F2 heavy chain (CD98) expression in surgically resectable stage III non-small cell lung cancer. *Exp Ther Med* 1:799-808, 2010
33. Kaira K, Ohde Y, Endo M, et al: Expression of 4F2hc (CD98) in pulmonary neuroendocrine tumors. *Oncol Rep* 26:931-937, 2011
34. Hamaoki M, Nagata A: Host macrophages produce diacetylspermine related with tumorigenesis. *Cancer Lett* 243:128-134, 2006



ASCO's Curricula for Advanced Practice Providers (ACAPP)

ACAPP offers specially selected ASCO University content to acquaint physician assistants and nurse practitioners with oncology practice. Available curricular packages include:

- A General Curriculum for those new to oncology
- Tumor-Focused Curricula for those with more experience

Learn more at university.asco.org/acapp.



American Society of Clinical Oncology

AUTHORS' DISCLOSURES OF POTENTIAL CONFLICTS OF INTEREST

Diacetylspermine Is a Novel Prediagnostic Serum Biomarker for Non–Small-Cell Lung Cancer and Has Additive Performance With Pro-Surfactant Protein B

The following represents disclosure information provided by authors of this manuscript. All relationships are considered compensated. Relationships are self-held unless noted. I = Immediate Family Member, Inst = My Institution. Relationships may not relate to the subject matter of this manuscript. For more information about ASCO's conflict of interest policy, please refer to www.asco.org/rwc or jco.ascopubs.org/site/ifc.

William R. Wikoff

No relationship to disclose

Samir Hanash

No relationship to disclose

Brian DeFelice

No relationship to disclose

Suzanne Miyamoto

No relationship to disclose

Matt Barnett

No relationship to disclose

Yang Zhao

No relationship to disclose

Gary Goodman

No relationship to disclose

Ziding Feng

No relationship to disclose

David Gandara

No relationship to disclose

Oliver Fiehn

No relationship to disclose

Ayumu Taguchi

No relationship to disclose