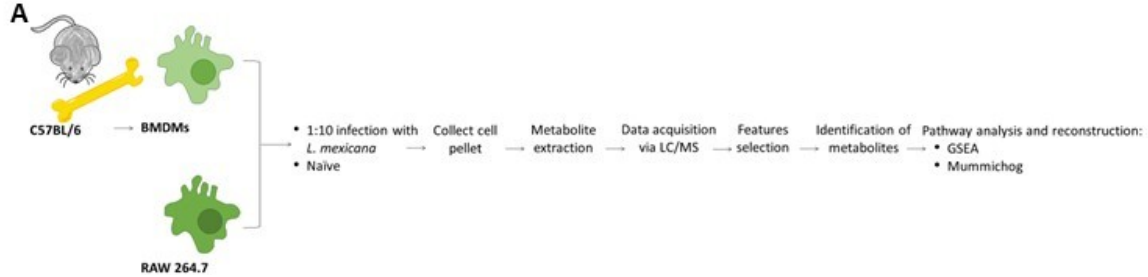
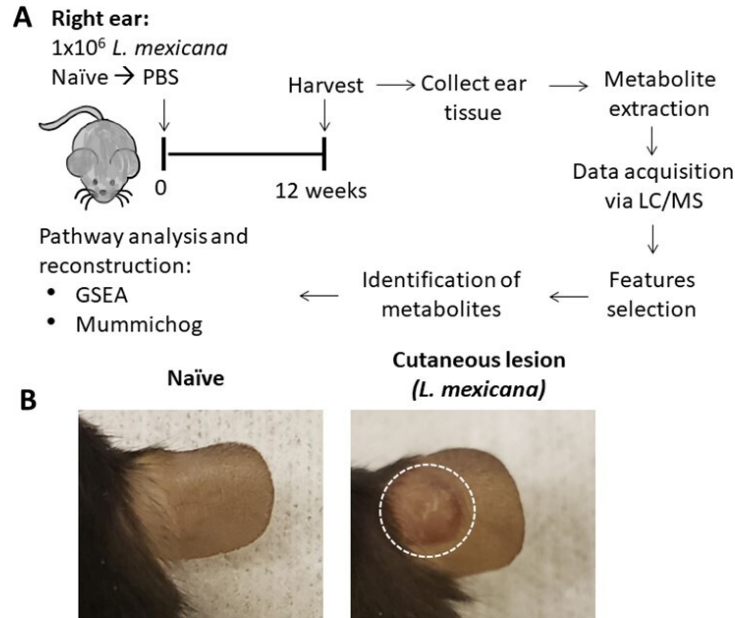


Leishmania mexicana Promotes Pain-reducing Metabolomic Reprogramming In Cutaneous Lesions

In vitro study design:



In vivo study design:



Sample table:

Sample ID	Experimental Variable / Factor	Mass Spec Mode	File name
RAW-L1_Cell_1	Cell pellet derived from RAW 264.7 infected with <i>L. mexicana</i> . Biological replicate 1, technical replicates 1-2-3.	Positive	RAW_Macrophages_Pellet
RAW-L1_Cell_2			
RAW-L1_Cell_3			
RAW-L2_Cell_1	Cell pellet derived from RAW 264.7 infected with <i>L. mexicana</i> . Biological	Positive	RAW_Macrophages_Pellet

RAW-L2_Cell_2 RAW-L2_Cell_3	replicate 2, technical replicates 1-2-3.		
RAW-L3_Cell_1 RAW-L3_Cell_2 RAW-L3_Cell_3	Cell pellet derived from RAW 264.7 infected with <i>L. mexicana</i> . Biological replicate 3, technical replicates 1-2-3.	Positive	RAW_Macrophages_Pellet
RAW-N_Cell_1 RAW-N_Cell_2 RAW-N_Cell_3	Cell pellet derived from naïve RAW 264.7. Technical replicates 1-2-3.	Positive	RAW_Macrophages_Pellet
BMDMSup-Control1_1 BMDMSup-Control1_2 BMDMSup-Control1_3	Supernatant from naïve BMDMs. Biological replicate 1, technical replicates 1-2-3.	Positive mode & Negative mode	BMDMSup_Pos_CompoundAbundances & BMDMSup_Neg_CompoundAbundances
BMDMSup-Control2_1 BMDMSup-Control2_2 BMDMSup-Control2_3	Supernatant from naïve BMDMs. Biological replicate 2, technical replicates 1-2-3.	Positive mode & Negative mode	BMDMSup_Pos_CompoundAbundances & BMDMSup_Neg_CompoundAbundances
BMDMSup-Control3_1 BMDMSup-Control3_2 BMDMSup-Control3_3	Supernatant from naïve BMDMs. Biological replicate 3, technical replicates 1-2-3.	Positive mode & Negative mode	BMDMSup_Pos_CompoundAbundances & BMDMSup_Neg_CompoundAbundances
BMDMSup-LMex1_1 BMDMSup-LMex1_2 BMDMSup-LMex1_3	Supernatant from BMDMs infected with <i>L. mexicana</i> . Biological replicate 1, technical replicates 1-2-3.	Positive mode & Negative mode	BMDMSup_Pos_CompoundAbundances & BMDMSup_Neg_CompoundAbundances
BMDMSup-LMex2_1 BMDMSup-LMex2_2 BMDMSup-LMex2_3	Supernatant from BMDMs infected with <i>L. mexicana</i> . Biological replicate 2, technical replicates 1-2-3.	Positive mode & Negative mode	BMDMSup_Pos_CompoundAbundances & BMDMSup_Neg_CompoundAbundances

BMDMSup-LMex3_1 BMDMSup-LMex3_2 BMDMSup-LMex3_3	Supernatant from BMDMs infected with <i>L. mexicana</i> . Biological replicate 3, technical replicates 1-2-3.	Positive mode & Negative mode	BMDMSup_Pos_CompoundAbundances & BMDMSup_Neg_CompoundAbundances
BMDMPellet-Control1_1 BMDMPellet-Control1_2 BMDMPellet-Control1_3	Cell pellet from naïve BMDMs. Biological replicate 1, technical replicates 1-2-3.	Positive	BMDM_Pellet_pos-Abundances-with-top-ID
BMDMPellet-Control2_1 BMDMPellet-Control2_2 BMDMPellet-Control2_3	Cell pellet from naïve BMDMs. Biological replicate 2, technical replicates 1-2-3.	Positive	BMDM_Pellet_pos-Abundances-with-top-ID
BMDMPellet-Control3_1 BMDMPellet-Control3_2 BMDMPellet-Control3_3	Cell pellet from naïve BMDMs. Biological replicate 3, technical replicates 1-2-3.	Positive	BMDM_Pellet_pos-Abundances-with-top-ID
BMDMPellet-LMex1_1 BMDMPellet-LMex1_2 BMDMPellet-LMex1_3	Cell pellet from BMDMs infected with <i>L. mexicana</i> . Biological replicate 1, technical replicates 1-2-3.	Positive	BMDM_Pellet_pos-Abundances-with-top-ID
BMDMPellet-LMex2_1 BMDMPellet-LMex2_2 BMDMPellet-LMex2_3	Cell pellet from BMDMs infected with <i>L. mexicana</i> . Biological replicate 2, technical replicates 1-2-3.	Positive	BMDM_Pellet_pos-Abundances-with-top-ID
BMDMPellet-LMex3_1 BMDMPellet-LMex3_2 BMDMPellet-LMex3_3	Cell pellet from BMDMs infected with <i>L. mexicana</i> . Biological replicate 3, technical replicates 1-2-3.	Positive	BMDM_Pellet_pos-Abundances-with-top-ID
VolpedoTissue_Pos_N1_1 VolpedoTissue_Pos_N1_2	Tissue from the ear of a naïve mouse. Biological replicate 1, technical replicates 1-2-3.	Positive	Volpedo_Compound_Abundances_Ear_Tissue_Standard_Runs & Volpedo_Compound_Abundance_Ear_Tissue

VolpedoTissue_Pos_N1_3			
VolpedoTissue_Pos_N2_1 VolpedoTissue_Pos_N2_2 VolpedoTissue_Pos_N2_3	Tissue from the ear of a naïve mouse. Biological replicate 2, technical replicates 1-2-3.	Positive	Volpedo_Compound_Abundances_Ear_Tissue_Standard_Runs & Volpedo_Compound_Abundance_Ear_Tissue
VolpedoTissue_Pos_Ipsi1_1 VolpedoTissue_Pos_Ipsi1_2 VolpedoTissue_Pos_Ipsi1_3	Tissue from the ipsilateral ear of an <i>L. mexicana</i> -infected mouse. Biological replicate 1, technical replicates 1-2-3.	Positive	Volpedo_Compound_Abundances_Ear_Tissue_Standard_Runs & Volpedo_Compound_Abundance_Ear_Tissue
VolpedoTissue_Pos_Ipsi2_1 VolpedoTissue_Pos_Ipsi2_2 VolpedoTissue_Pos_Ipsi2_3	Tissue from the ipsilateral ear of an <i>L. mexicana</i> -infected mouse. Biological replicate 2, technical replicates 1-2-3.	Positive	Volpedo_Compound_Abundances_Ear_Tissue_Standard_Runs & Volpedo_Compound_Abundance_Ear_Tissue
VolpedoTissue_Pos_Ipsi3_1 VolpedoTissue_Pos_Ipsi3_2 VolpedoTissue_Pos_Ipsi3_3	Tissue from the ipsilateral ear of an <i>L. mexicana</i> -infected mouse. Biological replicate 3, technical replicates 1-2-3.	Positive	Volpedo_Compound_Abundances_Ear_Tissue_Standard_Runs & Volpedo_Compound_Abundance_Ear_Tissue
VolpedoTissue_Pos_Ipsi4_1 VolpedoTissue_Pos_Ipsi4_2 VolpedoTissue_Pos_Ipsi4_3	Tissue from the ipsilateral ear of an <i>L. mexicana</i> -infected mouse. Biological replicate 4, technical replicates 1-2-3.	Positive	Volpedo_Compound_Abundances_Ear_Tissue_Standard_Runs & Volpedo_Compound_Abundance_Ear_Tissue
Naïve-Sample 1_1 Naïve-Sample 1_2 Naïve-Sample 1_3	Tissue from the ear of a naïve mouse. Biological replicate 1, technical replicates 1-2-3.	Positive	EarPos_All_Abundance_File
Naïve-Sample 6_1 Naïve-Sample 6_2 Naïve-Sample 6_3	Tissue from the ear of a naïve mouse. Biological replicate 2, technical replicates 1-2-3.	Positive	EarPos_All_Abundance_File
WT Ipsi-Sample 2_1	Tissue from the ipsilateral ear of a mouse infected with <i>L. mexicana</i> .	Positive	EarPos_All_Abundance_File

WT Ipsi-Sample 2_2 WT Ipsi-Sample 2_3	Biological replicate 1, technical replicates 1-2-3.		
WT Ipsi-Sample 7_1 WT Ipsi-Sample 7_2 WT Ipsi-Sample 7_3	Tissue from the ipsilateral ear of a mouse infected with <i>L. mexicana</i> . Biological replicate 2, technical replicates 1-2-3.	Positive	EarPos_All_Abundance_File
WT Ipsi-Sample 11_1 WT Ipsi-Sample 11_2 WT Ipsi-Sample 11_3	Tissue from the ipsilateral ear of a mouse infected with <i>L. mexicana</i> . Biological replicate 3, technical replicates 1-2-3.	Positive	EarPos_All_Abundance_File
VolpedoTissue_Neg_N1_1 VolpedoTissue_Neg_N1_2 VolpedoTissue_Neg_N1_3	Tissue from the ear of a naïve mouse. Biological replicate 1, technical replicates 1-2-3.	Negative	Tissue_CompoundAbundances_Neg_Nvsl_0p05pvalue
VolpedoTissue_Neg_N2_1 VolpedoTissue_Neg_N2_2 VolpedoTissue_Neg_N2_3	Tissue from the ear of a naïve mouse. Biological replicate 2, technical replicates 1-2-3.	Negative	Tissue_CompoundAbundances_Neg_Nvsl_0p05pvalue
VolpedoTissue_Neg_Ipsi1_1 VolpedoTissue_Neg_Ipsi1_2 VolpedoTissue_Neg_Ipsi1_3	Tissue from the ipsilateral ear of an <i>L. mexicana</i> -infected mouse. Biological replicate 1, technical replicates 1-2-3.	Negative	Tissue_CompoundAbundances_Neg_Nvsl_0p05pvalue
VolpedoTissue_Neg_Ipsi2_1 VolpedoTissue_Neg_Ipsi2_2 VolpedoTissue_Neg_Ipsi2_3	Tissue from the ipsilateral ear of an <i>L. mexicana</i> -infected mouse. Biological replicate 2, technical replicates 1-2-3.	Negative	Tissue_CompoundAbundances_Neg_Nvsl_0p05pvalue
VolpedoTissue_Neg_Ipsi3_1 VolpedoTissue_Neg_Ipsi3_2 VolpedoTissue_Neg_Ipsi3_3	Tissue from the ipsilateral ear of an <i>L. mexicana</i> -infected mouse. Biological replicate 3, technical replicates 1-2-3.	Negative	Tissue_CompoundAbundances_Neg_Nvsl_0p05pvalue

VolpedoTissue _Neg_Ipsi4_1 VolpedoTissue _Neg_Ipsi4_2 VolpedoTissue _Neg_Ipsi4_3	Tissue from the ipsilateral ear of an L. mexicana-infected mouse. Biological replicate 4, technical replicates 1-2-3.	Negative	Tissue_CompoundAbu ndances_Neg_Nvsl_0p 05pvalue
---	--	----------	---